



## JHD Modular Rack System

### Pre Install:

· Inspect the packaging and product for signs of damage and report immediately to carrier. Keep all packaging for filing a damage claim if needed. Jeeperman, LLC is not responsible for shipping damages!

· One person can do this installation. However, it is recommended to have a helper to lift and assist.

This is a fairly straight forward installation for most owners taking about an hour and does require common hand tools. If after reading the installation you do not feel confident in the procedure, we strongly recommend taking this to a competent shop to ensure proper installation for years of trouble free service.

It would be advisable to read these instructions, in their entirety, BEFORE starting the installation. If you are uncomfortable with this, please e-mail or contact us or seek a qualified professional installer.

### Kit Contents – PHOTO 1 :

1 – Rack Unit  
2 – Rack Support Arms  
2 – Rack Support Plates  
8 – 3/8-16"x 3" Bolt  
8 – 3/8-16" Top Lock Nuts  
8 – 7/16" Hardened Flat Washers  
4 – 7/16-14" x 3/4" Bolt  
2 – Stickers  
And these instructions.

### Required tools and supplies:

2 - 9/16" Wrench, Socket, Etc.  
1 - 5/8" wrench  
2 – FtLb Torque Wrench  
Silicone Sealant

· Familiarize yourself with the parts. Verify all parts and hardware are accounted for and contact us for any replacements. It is possible that some holes may need to be re-tapped as they can become filled during the powder coating process. To ease in assembly lightly coat hardware in assembly lube or waterproof grease. This will also protect the Zinc finished hardware from road corrosives.

## The Installation

- On a flat surface, place the two rack supports as shown in PHOTO 2 with the angle brackets facing each other to fit on the tire carrier properly. Lay 4 washers on top of the supports to space the rack above the supports. The washers are to prevent the rack from 'rattling' against the arms. The rack supports will be behind the tire next to the tailgate when installed on the Jeep.
- There is no 'front or back' on the rack.
- On the rack floor there are 4 groups of 4 mounting holes. Choose which set you will be using (See note below) – The inner most holes will space the rack furthest away from the tire.
- Put a small amount of silicone sealer on each bolt, to prevent water from entering the sealed support structure. Use a washer on top of the rack and position the bolt through the rack (PHOTO 3) and through the washer placed on top of the supports in the previous steps and tighten only hand tight at this time.

### NOTE:

*As a general guideline, the first inner holes will clear 36"- 38" tires, second inner holes for 33" – 35" tires, third inner holes for 30"- 32" tires and the outermost holes for tires smaller than 30". These are just guidelines and some tire sizes may not fit the same as other brand tires of the same size. Position the bolts where it suits your needs best.*

- With a helper lift rack and support assembly over the installed tire on the carrier. Check for positioning and centering.
- Place under plates, bolts and nuts as shown in PHOTO 4 (nuts on top plate at support bases) and loosely tighten.
- After complete assembly and alignment, tighten all hardware to 40 ft. lbs.

See website [www.Jeeperman.com](http://www.Jeeperman.com) for any product updates. Raingler part numbers RMN1, RMN2 and RPB are available for the rack to secure items down snugly and are highly recommended in conjunction with this unit. See [www.raingler.com](http://www.raingler.com) if your dealer does not carry these items.

If you have any questions or concerns about the product or installation, feel free to contact tech support at 509-340-3911 or [info@jeeperman.com](mailto:info@jeeperman.com). We also welcome your feedback and input.



PHOTO 1



PHOTO 2



PHOTO 3

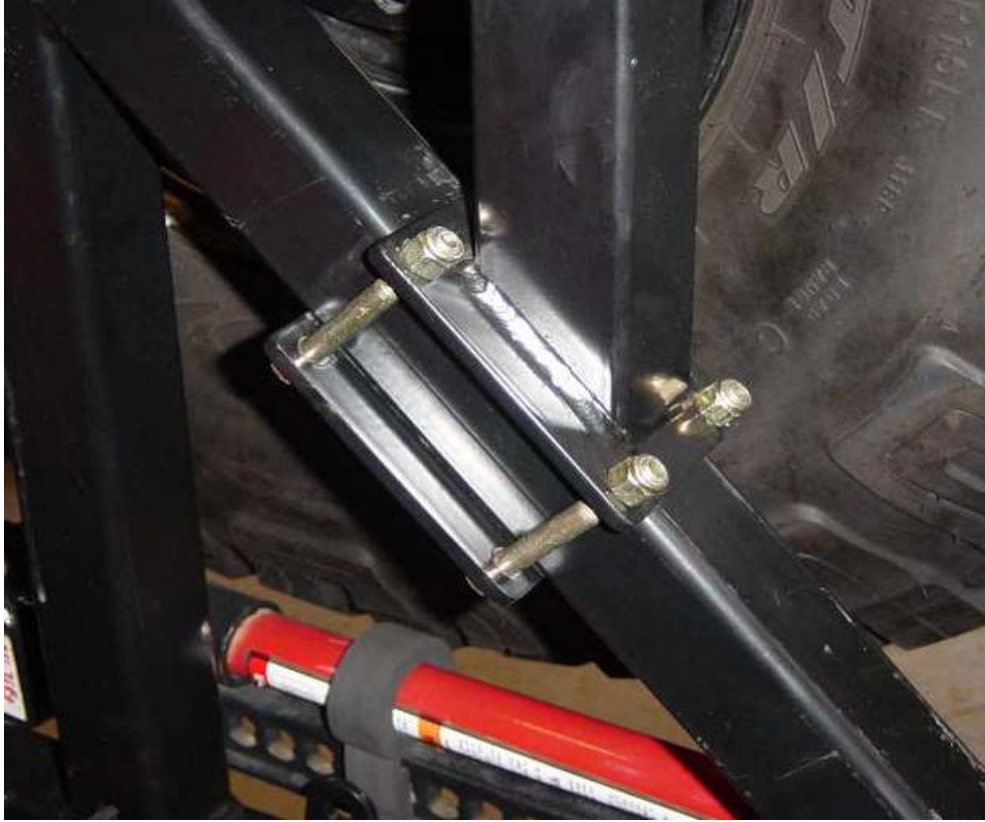


PHOTO 4